



# Appearance Policy



# Table of Contents

<b>Introduction</b> .....	<b>3</b>
Overview .....	3
Relevant Legislation .....	3
Uniform Expectations .....	3
<b>Junior School Uniform: Years 7 - 9</b> .....	<b>4</b>
Formal Uniform .....	4
<b>Senior School Uniform: Years 10 - 12</b> .....	<b>5</b>
Formal Uniform .....	5
<b>Winter School Uniform: Years 7 - 12</b> .....	<b>6</b>
<b>Sports Uniform: Years 7 - 12</b> .....	<b>7</b>
<b>House Shirts: Years 7 - 12</b> .....	<b>8</b>
<b>Signature Programs Shirts: Year 7</b> .....	<b>9</b>
<b>Cooee Shirts: Year 10 - 12</b> .....	<b>10</b>
<b>Representational Uniform</b> .....	<b>11</b>
<b>Uniform Accessories: Years 7 - 12</b> .....	<b>12</b>
Hats .....	12
Socks: Years 7 – 12 .....	13
Ties: Years 10 – 12 .....	13
<b>Shoes: Years 7 - 12</b> .....	<b>134</b>
Workplace Health and Safety .....	14
Footwear requirements .....	14
<b>Hair/Hair Accessories: Years 7 - 12</b> .....	<b>15</b>
<b>Make-Up: Years 7 - 12</b> .....	<b>15</b>
<b>Jewellery: Years 7 - 12</b> .....	<b>15</b>
<b>Tattoos: Years 7 - 12</b> .....	<b>15</b>
<b>Undergarments: Years 7 - 12</b> .....	<b>15</b>
<b>Consequences of Non-Compliance with the Appearance Policy</b> .....	<b>16</b>
Out of Uniform Procedure.....	16





# Introduction

## Overview

Elanora State High School has a complete dress and sport uniform in accordance with the decision made by the parent community (Parents and Citizenship Association). A gender-neutral school uniform helps in achieving the school's identity, cohesion, tone, pride and spirit. Students at Elanora State High School are permitted to choose the formal uniform in which they feel most comfortable. ALL students are required to wear the uniform correctly and are encouraged to take pride in their appearance by keeping their uniform neat and tidy. This policy seeks to assist students and parents by identifying requirements and expectations for as many uniform and appearance items as possible.

## Relevant Legislation

This Appearance Policy has been developed in accordance with the Education (General Provisions) Act 2006 (Sections 360-363) ["The Act"] and the Department of Education and Training policy SMS-PR-022: Student Dress Code in relation to implementing student dress codes in Queensland State schools. It clearly explains and outlines the standards of acceptable dress at Elanora State High School.

## Uniform Expectations

In accordance with this Appearance Policy, students are to wear the formal uniform or sports uniform (only on timetabled or approved days) when attending school, whilst travelling to and from school or when engaging in out of school activities. Students are to wear the correct formal uniform for all formal occasions such as excursions, public appearances, awards nights, school photos or other school functions as specified.

Consistent with this policy, students are required to present at school in a neat and tidy manner at all times. Sleeves must not be turned up and shorts and skirts must not be turned up or down. Skirts and shorts must be worn at the length sold with school logo visible (skirts must sit no more than two inches above the knee). No modifications are permitted.

By adhering to the Appearance Policy, our students continue to promote a positive image of the school to our local community and demonstrate that the school has high expectations of its students. It should be noted that where a student's appearance and/or uniform may not be in keeping with the spirit of this policy and the school and communities' values and expectations, a conflict resolution/mediation process involving the student, parent/caregiver, Principal and a Parents and Citizenship Association (P&C) Representative may occur.





# Junior School Uniform: Years 7 - 9

## Formal Uniform

Any of the junior striped shirts can be worn with the long formal pant or skirt.



Junior School	
Skirt	Navy skirt with school logo
Shorts	Tailored navy shorts with school logo
Blouse or shirt	Pinstriped with school logo
Shoes	All black leather lace-up school type or black jogger with leather upper and all-purpose sole
Socks	White socks visible to the ankle bone
Stockings	Stockings are optional but must be either navy, black or flesh coloured without a pattern
Hat	Bucket hat or cap with school logo





## Senior School Uniform: Years 10 - 12

### Formal Uniform

Any of the senior white shirts can be worn with the long formal pant or skirt. From 2024, the tartan skirt will be phased out and replaced with a navy skirt.



Senior School	
Skirt	Navy skirt with school logo <b>Note:</b> 2024 senior students with a tartan skirt may continue to wear it during senior years
Shorts	Tailored navy shorts with school logo
Blouse or shirt	White with school logo
Shoes	All black leather lace-up school type or black jogger with leather upper and all-purpose sole
Socks	White socks visible to the ankle bone
Stockings	Stockings are optional but must be either navy, black or flesh coloured without a pattern
Hat	Bucket hat or cap with school logo
Ties	Pip tie for the blouse and tie for the shirt





# Winter School Uniform: Years 7 - 12

Any of the senior or junior shirts can be worn with the long formal pant. In the winter range of clothing, students are permitted to wear the fleece or softshell jacket but not the discontinued Elanora State High School jumper.

## Term 2 and Term 3 only

- Students may wear a plain (motif free) navy scarf and gloves. No other colours are permitted and under no circumstances can the item of clothing cover the student’s face.
- Year 12 students have the option of purchasing and wearing a senior jersey in accordance with school guidelines.



Winter Uniform	
Jacket: Fleece	Navy fleece with school logo on front
Jacket: Softshell	Navy softshell with school logo on front
Senior jersey	Year 12 students may wear a senior jersey in accordance with school guidelines
Pants	Navy tailored long pant with school logo Navy fleece track pant with school logo
Blouse or shirt	Juniors: Pinstriped with school logo Seniors: White with school logo, shirts with a tie and blouses with a pip tie
Shoes	All black leather lace-up school type or black jogger with leather upper and all-purpose sole
Socks	White socks visible to the ankle bone
Stockings	Stockings are optional but must be either navy, black or flesh coloured without a pattern
Hat	Bucket hat or cap with school logo





## Sports Uniform: Years 7 - 12

Students are allowed to wear sports uniform to and from school, on school sports day. Full School Formal Day Uniform is to be worn to and from school on all other days, unless the student has sport for Period 1. Students change for Physical Education classes. The presentation of all students must be consistent with this Appearance Policy and in accordance with Workplace Health and Safety Legislation.



Sport Uniform	
Shorts	Navy with school logo on front
Shirt	Navy polo with school logo on front
Shoes	All black leather lace-up school type or black jogger with leather upper and all-purpose sole. Change to sport specific shoes only during HPE lesson and/or while competing
Socks	White socks visible to the ankle bone
Hat	Bucket hat or cap with school logo





## House Shirts: Years 7 - 12

House shirts will be available to purchase in 2024. Students are allowed to wear their house shirt for house events or on **Fridays only** unless otherwise advised. House leaders are permitted to wear their house shirts on additional days as advised. For example, if there is a formal school event on a Friday, students will be expected to wear their day uniform in these circumstances.



Friday Uniform	
Shorts	Navy with school logo on front
Shirt	Relevant house shirt (Bilinga, Duranbah, Coolangatta or Kirra)
Shoes	All black leather lace-up school type or black jogger with leather upper and all-purpose sole. Change to sport specific shoes only during HPE lesson and/or while competing
Socks	White socks visible to the ankle bone
Hat	Bucket hat or cap with school logo







## Signature Programs Shirts: Year 7

XCElerate Academies shirts will be given to the students of these programs. Students are allowed to wear this shirt in lieu of a sport shirt on the day they have sport only or at special events, eg competitions unless otherwise advised. For example, if there is a formal school event, the students will be expected to wear their day uniform in these circumstances. XCElerate Academies shirts may be worn on **Fridays also**.



Signature Programs Uniform	
Shorts	Navy with school logo on front
Shirt	XCElerate Academies shirt
Shoes	All black leather lace-up school type or black jogger with leather upper and all-purpose sole. Change to sport specific shoes only during HPE lesson and/or while competing
Socks	White socks visible to the ankle bone
Hat	Bucket hat or cap with school logo





## Cooee Shirts: Year 10 - 12

Cooee students are expected to wear the full school day uniform. Cooee shirts may be worn on **Fridays only**.



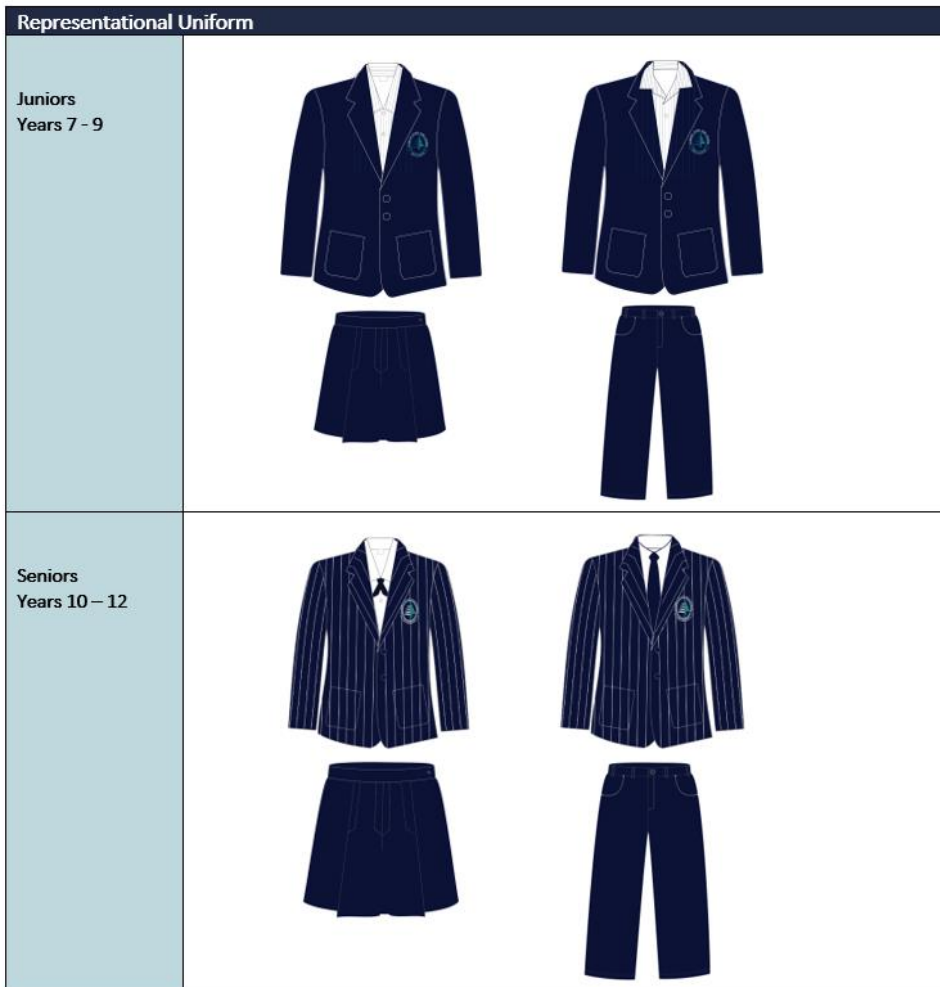
Cooee Uniform	
Shorts	Navy with school logo on front
Shirt	Cooee shirt
Shoes	All black leather lace-up school type or black jogger with leather upper and all-purpose sole. Change to sport specific shoes only during HPE lesson and/or while competing
Socks	White socks visible to the ankle bone
Hat	Bucket hat or cap with school logo





# Representational Uniform

Students are to wear the correct formal uniform for all formal occasions. At times, students will represent Elanora State High School in public appearances for events such as ANZAC Day, awards nights or other school functions as specified. School leaders will be issued with their own representational uniform. Other students who require a blazer, pip tie, tie and ESHS socks may borrow these from the school.



Representational Uniform	
<b>Shorts</b>	Navy with school logo on front
<b>Shirt</b>	Juniors: Pinstriped with school logo Seniors: White with school logo, blouse with a pip tie and shirt with tie
<b>Shoes</b>	All black leather lace-up school type or black jogger with leather upper and all-purpose sole. Change to sport specific shoes only during HPE lesson and/or while competing
<b>Socks</b>	White socks visible to the ankle bone
<b>Hat</b>	Bucket hat or cap with school logo





# Uniform Accessories: Years 7 - 12

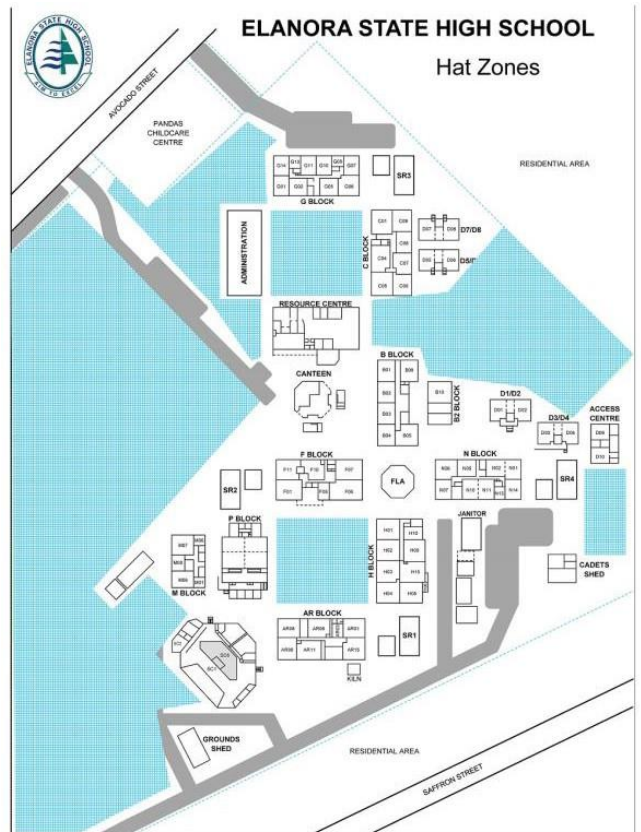
At Elanora State High School, a range of uniform accessories are available for purchase at the Uniform Shop. These are outlined in more details in the section below.



## Hats

At Elanora State High School sun safety is a priority, and as such, all students in Year 7 will be issued with a bucket hat with the school logo. Students in Years 8 - 12 may purchase a cap or bucket hat with the school logo from the Uniform Shop. Please note that the caps will be available for purchase for a short term only as they are being phased out to align with the Department’s Sun Smart Policy.

Hats are required to be worn for any activity in the sun, including during break times in the ‘Hat Zones’ (see map). **Hoodies or beanies are not allowed under any circumstances.** It is recommended that all garments are labelled with the student’s name so the item/s can be returned if found in lost property.





## Socks: Years 7 – 12

Plain white socks visible to the ankle bone are to be worn with the shoes. Elanora State High School socks are available for purchase in the Uniform Shop but are not a compulsory item.



## Ties: Years 10 – 12

In Term 1, 2024 Elanora State High School will introduce a tie to the day uniform for senior students. The pip tie will accompany the blouse and the tie will accompany the shirt, as outlined in the below table.

Tie Introduction	Pip tie for the blouse	Tie for the shirt
Term 1, 2024 Years 10 – 12 only		





# Shoes: Years 7 - 12

## Workplace Health and Safety

Due to workplace Health and Safety regulations, students' footwear must provide adequate protection and cover the entire foot. Footwear selection must also take into account the health benefits of growing children wearing supportive footwear to minimise future health risks. Elanora State High School footwear requirements are outlined below.

## Footwear requirements

- **All black leather** lace-up school type or black jogger with leather upper and all-purpose sole or black leather school shoes and with no coloured markings or non-black sides in accordance with enclosed photos.
- **No skate shoes, slip-ons, boots, high tops, coloured laces, ballet type, suede or canvas shoes will be accepted.** Some of these shoes do not provide sufficient protection when students are participating in learning experiences or in the playground.
- **During HPE lessons**, or while competing on sport days, sport-specific shoes can be changed into if necessary. All black leather lace-up school shoes are required during class time, before school and during lunch breaks at all times.
- **Sport Carnival days:** On sport carnival days students are encouraged to support their house by wearing house colours. Attire must take into account sun safety and be appropriate to a school setting. Appropriate footwear is also required.

### ✓ Examples of approved shoes ✓



### X Examples of inappropriate shoes X



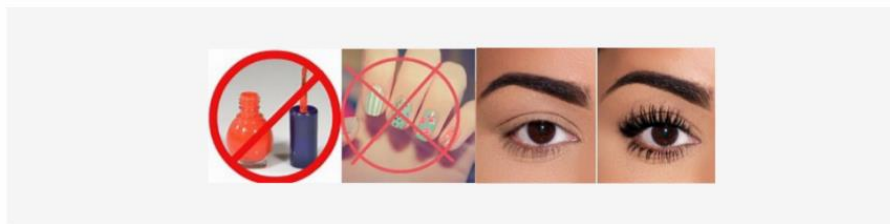


## Hair/Hair Accessories: Years 7 - 12

- Hair must be clean, neat and tidy with natural tones. Styles should be appropriate for school.
- **Please note** that student's hair must be tied back for any practical component of subjects as per Workplace Health and Safety Guidelines. Any ribbons worn must be navy.

## Make-Up: Years 7 - 12

- No visible make-up or nail polish is to be worn.
- No acrylic, gel or false nails of any kind.
- No false eye-lashes of any kind.
- Sunscreen that is of a natural tone is encouraged to be worn.



## Jewellery: Years 7 - 12

The following visible jewellery is permitted:

- **Watch:** Wearing a watch is optional.
- **Necklaces:** Items worn on necklaces for religious purposes must be long enough to be concealed below the uniform neckline.
- **Earrings:** Students with pierced ears may wear a maximum of two gold or silver studs or sleepers in each ear lobe. No spacers in the ear(s) are allowed. For safety, during sport only studs may be worn.
- **Body jewellery:** No facial or body jewellery permitted. A clear 'retainer' may be worn to keep the piercing from closing. Piercings CANNOT be covered with a Band-Aid.
- No other visible jewellery is permitted.

## Tattoos: Years 7 - 12

- In keeping with our school culture, Elanora State High School has a no visible tattoo policy. The school acknowledges that tattoos are part of some religious and cultural beliefs and practices.
- Students who have a visible tattoo are required to have it covered at all times whilst at school or on school activities.

## Undergarments: Years 7 - 12

- Long sleeved t-shirts are not permitted.
- White t-shirts may be worn but should not show through the uniform. Any undershirts/undergarments must be tucked in so they are not visible.
- No t-shirts or long-sleeved t-shirts are to be worn outside the uniform.





## Consequences of Non-Compliance with the Appearance Policy

Parents, we believe it is the student's responsibility to see that their uniform is ready for school. They are old enough to wash and iron them if something prevents you from doing so.

On the rare occasion that a student is unable to be correctly attired, they are required to follow the Out of Uniform Procedure. For infringements of the school uniform code the Education (General Provisions) Act 2006 allows schools with dress codes like Elanora State High School to:

- Impose a detention for a student during lunch or after school (if after school, parents are informed before detention occurs);
- Prevent student from attending, or participating in, any activity for which student is representing school; or
- Prevent student from attending or participating in any school activity that is not an essential school educational program.
- Support the student to comply with the dress code using loan items or removal of inappropriate items.

N.B. Students are reminded when they are in our school uniform outside of the school grounds that they are representatives of Elanora State High School and are required to behave and wear the uniform in an exemplary manner. Bringing the school into disrepute is dealt with under the Student Code of Conduct.

School students in Years 7 - 9 wear the Junior School uniform and students in Years 10 - 12 wear the Senior School uniform.

### Out of Uniform Procedure

- Prior to the commencement of the school day, any student out of uniform is required to report to Student Services.
- If the student has a note from a parent/caregiver with a valid reason, or comes to Student Services of their own accord before school begins, the student is provided with a loan item of clothing for the day and no consequence is applied.
- If the student is found in breach of the Appearance Policy and has not visited Student Services, the student is provided with a loan item of clothing for the day and a supervised lunch detention is issued.
- Failure to follow the Out of Uniform Procedure will result in referral to the relevant Dean for consequences in line with the school's Code of Conduct.

Under no circumstances can a person(s) who is not enrolled at Elanora State High School enter the school grounds wearing part of the Elanora State High School uniform. Any student providing an outsider with items of Elanora State High School uniform by which they seek to enter the school grounds will be dealt with as a major violation of the Elanora State High School Student Code of Conduct.

